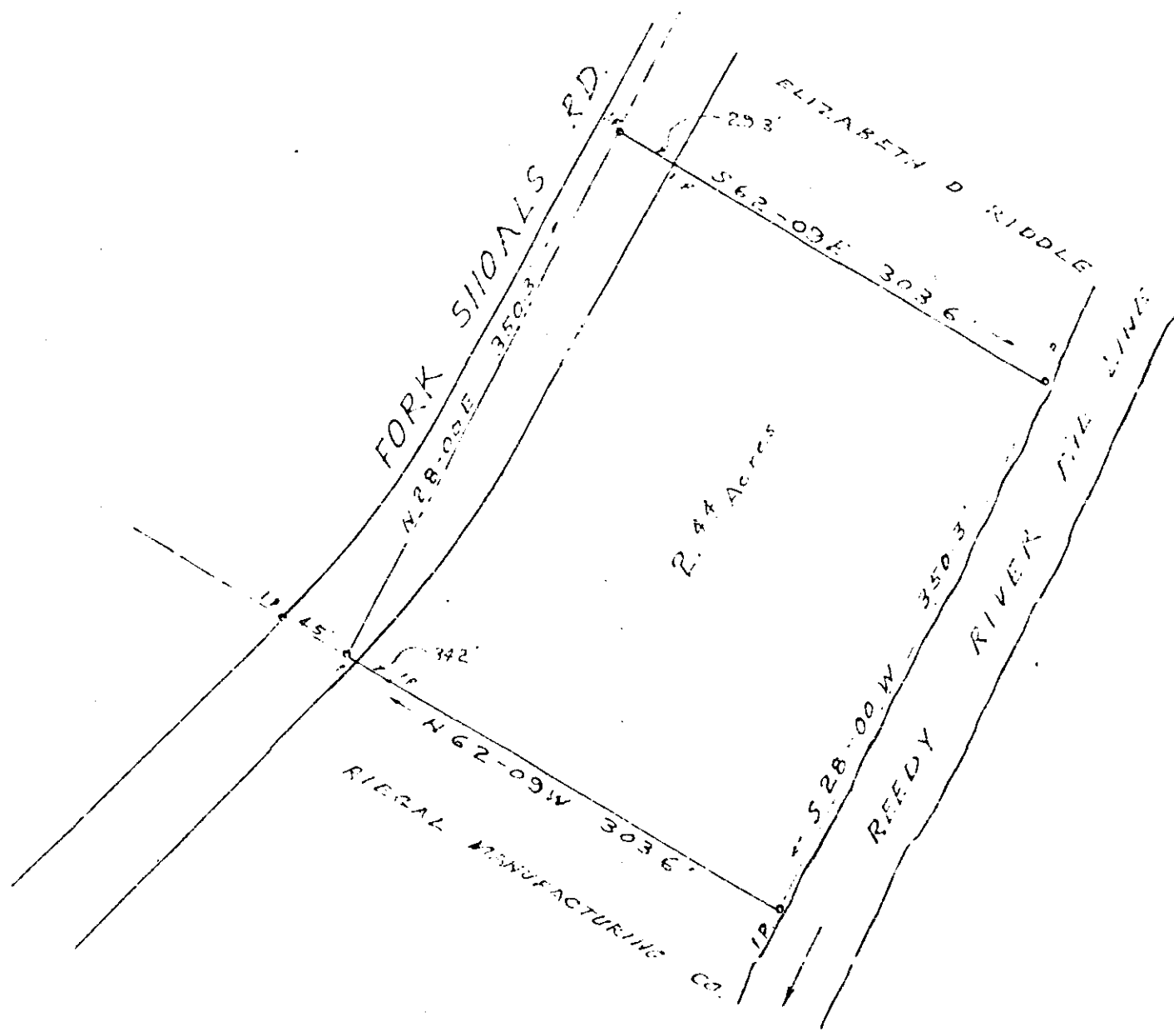
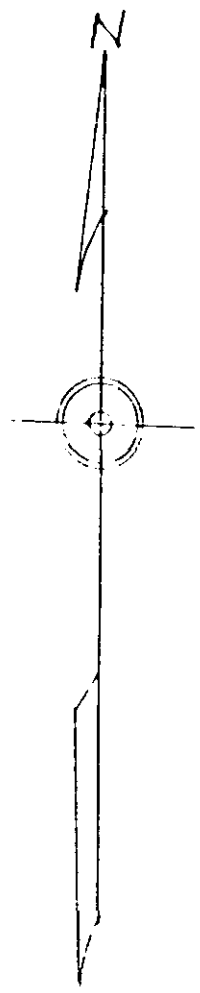


Plat Book LL, Page 79B



1120
GREENVILLE CO. S. C.
AUG 23 1 24 PM 1956
DILLIE FARMER
R.M.C.

PROPERTY OF
ELIZABETH D. RIDDLE
GREENVILLE COUNTY S. C.

AUG 28 1956 SCALE 1"=100' AUG 15 1956

21904

LL-79

Field book 1956 Page 210 516

21924 and this 28 Aug 1956
and Recorded in Vol. LL Page 79
Cobbie V. Sampson
Register Means Conveyance Streamable 1956

29